

**University / College Library**  
**Broward Community College, Central Campus**

**LiteratureResourceCenter**

The Literature Resource Center provides biographical, bibliographical, and criticism on authors of all types from all time periods. It includes text from Contemporary Authors (over 100,000 biographies), much of the Contemporary Literary Criticism series, Merriam-Webster's Encyclopedia of Literature, as well as the Dictionary of Literary Biography (over 10,000 critical biographies). Additionally, selected articles from over 70 literary journals are included. The database may be accessed on campus or from home or office in the following ways:

**LINCC Literature Resource Center:**

- BCC, and FAU students, faculty and staff may access the Literature Resource Center database through LINCCWeb: [https://www.linccweb.org/eresources.asp?lib\\_code=fcc0300](https://www.linccweb.org/eresources.asp?lib_code=fcc0300) Broward Community College students, faculty and staff must enter their 14-digit library number on their BCCCard. Your PIN number is the last four numbers of your social security number. You may change your PIN to any four numbers you choose.
- Florida Atlantic University students, faculty and staff with an Owl Photo I.D. Card that has been **entered into the LINCC system at the U/CL Library Circulation Desk**. Note: a valid I.D. number must be entered to use the database whether on campus or from home.

**FAU Literature Resource Center:**

Florida Atlantic University students, faculty and staff may access the Literature Resource Center directly on the FAU/LUIS network computers at <http://www.fau.edu/library/>. Under Quick Links, click on "EZproxy." Enter the number on your Owl Card into the box and click "Login." Under Quick Links, click on "Indexes and Databases" then "Databases by Title," then "L" and click "Literature Resource Center."

Once you have entered the database, select the type of search you need: Author Name, Title, Genre, Literary Movement/Time Period, Literary Themes, Literary Topics, or Custom Search. If you are looking for criticism on an author's work, choose **"Title Search"** then fill in the title and the author's last name, toggle the appropriate buttons under each, then click **"Search."**

The screenshot shows the 'Title Search' page of the Literature Resource Center. The page has a dark blue header with the 'LiteratureResourceCenter' logo. On the left, there is a navigation menu with links for 'Main Menu', 'Help', and 'Search Tips'. The main content area is titled 'Title Search' and contains the following elements:

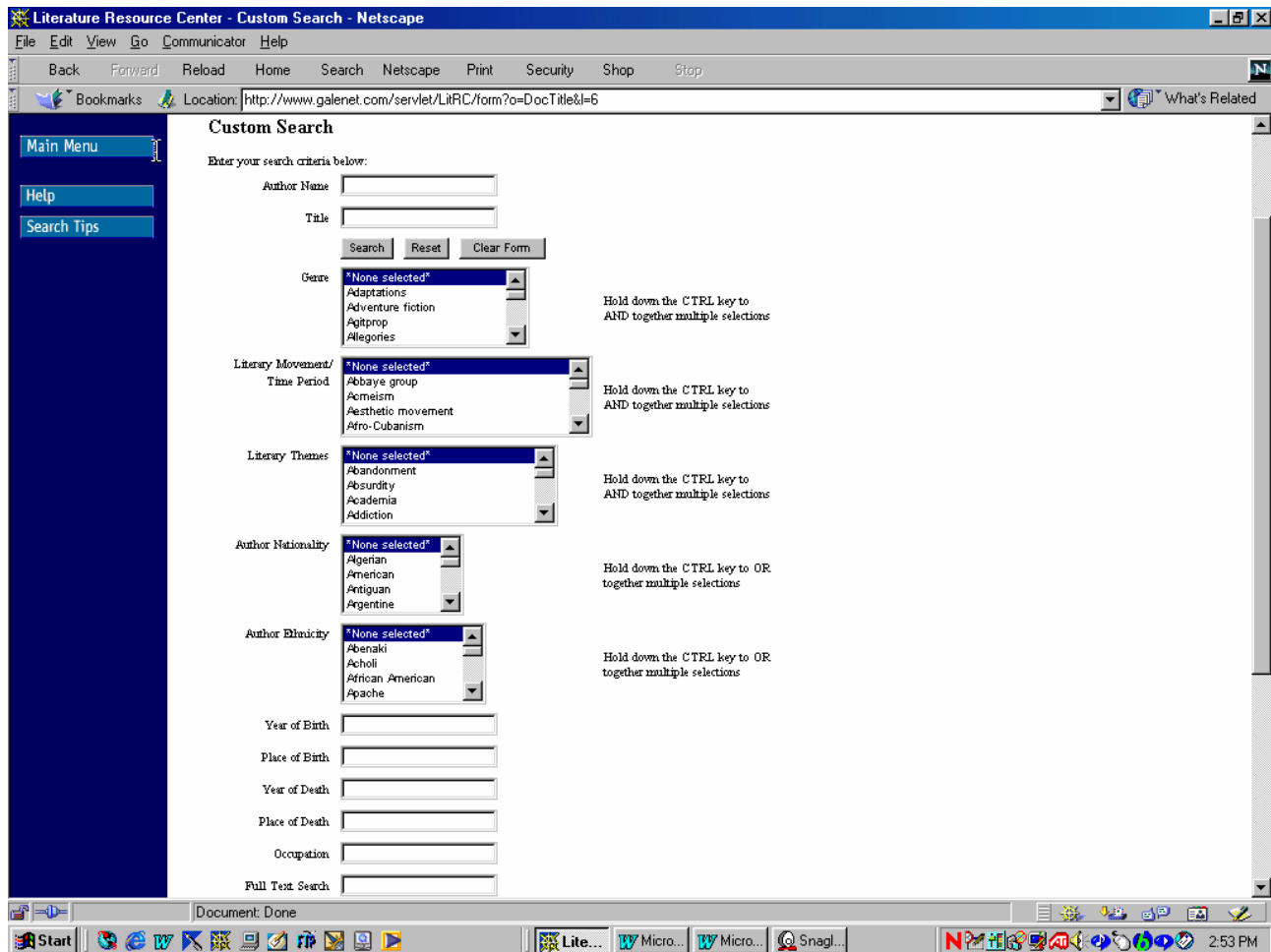
- An input field for 'Enter the title of a work:'.
- Three radio button options for search criteria:
  - Match words exactly as entered (Returns essays about titles that contain the exact phrase entered)
  - Match all words entered (Returns essays about titles that contain all the words entered in the order entered)
  - Match any word(s) entered
- A 'Return Results' dropdown menu set to '10'.
- Buttons for 'Search', 'Reset', and 'Clear Form'.
- A section for refining the search by author name, with a text input field and two radio button options:
  - Name contains
  - Start of last name
- A note below the author name options: 'Name contains: Enter any combination of first, middle, and/or last name.'

**Note:** When using the exact title search, be sure to include the leading article of the title ("The," "A," "An," etc.), where applicable, for more accurate results.

At any screen you can click on **"Help"** to find information on options for your search.

**"Search Tips"** offers advice for punctuation, operators and other information to improve your search results.

Perhaps the most helpful way to search is the **"Custom Search."** Author and Title are free text searches, while Genre, Literary Movement, Literary Themes, Author Nationality and Ethnicity are chosen by clicking within the pull-down menus.



All sources are checked unless you scroll to the bottom of the screen and remove checks from any of the databases. Once you have completed the options, click **"Search"** at the bottom of the screen.

Your search: Author Last Name starts with Poe\* AND Titles containing any of the words: Black Cat  
 Found 10 Documents  
 Document(s) 1-10 of 10  
 Tip: To reorder these documents, click on the appropriate heading below.

	Document Title	Type
<input type="checkbox"/>	Poe, Edgar Allan <a href="#">"The Black Cat," in Literature Resource Center, Gale Research, 1999. Reproduced in Literature Resource Center.</a>	Work Overview
<input type="checkbox"/>	Poe, Edgar Allan <a href="#">Colton, George. "Poe's Tales," in The American Review, Vol. II, No. III, September, 1845, pp. 306-09. Reprinted in Nineteenth-Century Literature Criticism, Vol. 16. Reproduced in Literature Resource Center.</a>	Criticism

Once the search is complete, you may click on the hyperlink to view the text or save the items by checking the box beside the relevant results, then clicking on the **"Update My Sourcebook"** button at the top or bottom of the screen.

If you prefer to e-mail your results, click the **"E-mail Data Home"** button, insert your  
Once your search is completed, your results will be displayed:

**To print:** click the **"Format for Printing"** button on the left menu bar.

**To send your results:** click the **"E-mail Data Home"** button, insert the e-mail address on the next screen, and click **"Send."**

**To save your results:** Insert your diskette into drive: A. At the left side of full-text article, Click on the "Format for Printing" button. Now click on the word **"File"** in the top left corner of the browser, then click on **"Save As."** Click on the down arrow in the "Save in" box, and click on **"3 1/2 Floppy (A:)."** Click on the down arrow in the **"Save as Type"** box, and select **"Plain Text (\*.txt)."** Click in the **"File name"** box, rename the filename and add **".txt"** to the end of the filename. Click on the **"Save"** button. Click on the **"Back"** button in the top row of browser. Now you may open the floppy in your word processing program. If it doesn't display, make sure the **"Open"** dialog box displays **"All files"** at the bottom pull-down.

An **"Author Search"** will yield a wide variety of helpful information.

Please note that not all information will be available for all authors!

If you choose to try a different type of search, simply click on the **"Revise Search"** button on the left menu.

Did you find everything you needed in this database? If you did not, consider searching in OmniFile Full Text Mega, Academic Search Premier, MagillOnLiterature, or Expanded Academic ASAP. Go to <http://ucl.broward.edu> and choose **"Finding Articles."** If you attend FAU or are

in the U/CL Library, you may wish to try the full-text JSTOR, Project Muse, Literature Online (LION) , and the MLA International Bibliography databases.

For additional assistance please phone the Reference Desk: 954-201-6223 or 954-201-6653. For online assistance, go to <http://ucl.broward.edu/> and click "Ask a Librarian."

Monday – Thursday 8:00 a.m. - 9:00 p.m.

Friday 8:00 a.m. - 6:00 p.m.

Saturday 9:00 a.m. - 5:00 p.m.

Sunday 2:00 p.m. - 9:00 p.m.

Sunday, IIIA and IIIB 2:00 p.m. - 6:00 p.m.

Changes in hours are posted on the U/CL Web Page at <http://ucl.broward.edu>

*Revised by DT, 04/06/2004*